

TINTAGEL DRIVE

Land at Tintagel Drive, Stanmore, HA7 4SR

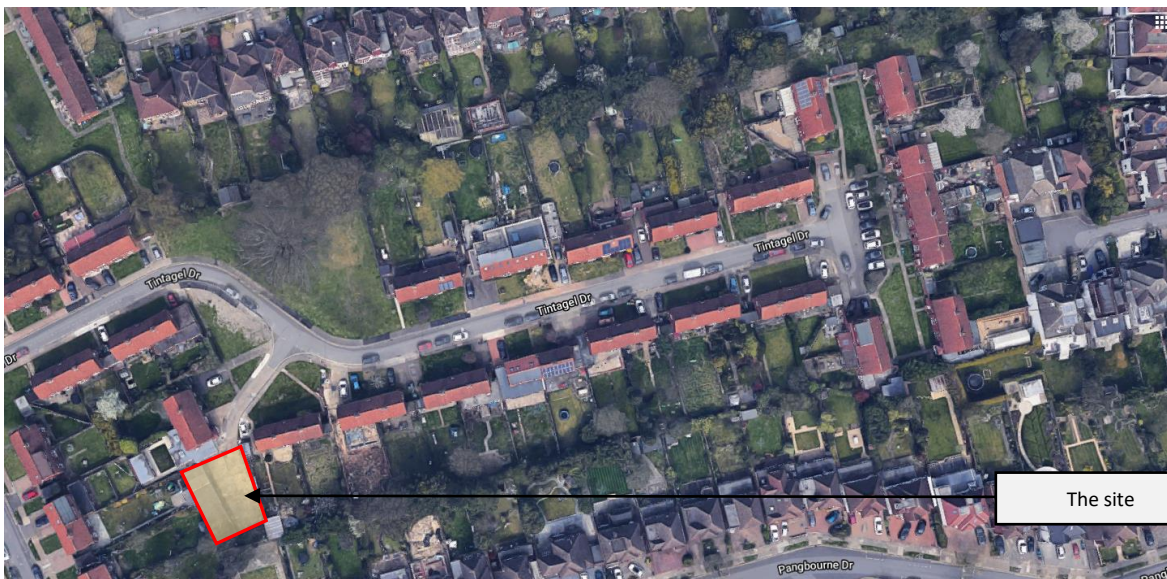
Mix's proposal for the Tintagel Drive site

The site

The site is located near Stanmore underground station and is surrounded by semi-detached housing. It sits at the end of a small lane in a quiet suburban context. The adjacent homes all have red brick walls and steeply pitched tiled roofs. Many of the homes have been extended horizontally extruding the original form or have had rear and side extensions.



View of the site from the raised landscaped area to the north.



Location plan

Proposed scheme



Site Plan



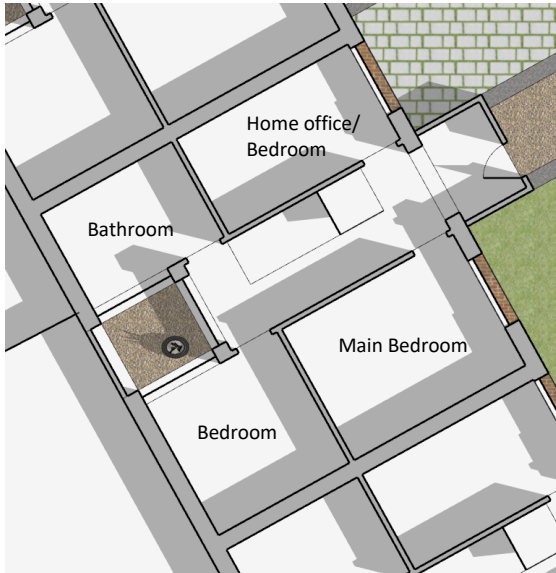
The proposal reflects the form, colours and materials of the existing adjacent buildings



View of the proposal from Tintagel Drive

Adaptable living

Adaptability is a key component of sustainable design as it will result in less waste and redundancy. It allows homes to grow evolve with the families that live in them improving quality of life and wellbeing.



Ground floor layout option 1



Ground floor layout option 2

The ground floor layout can take a number of configurations providing en-suite facilities or a home office or study.

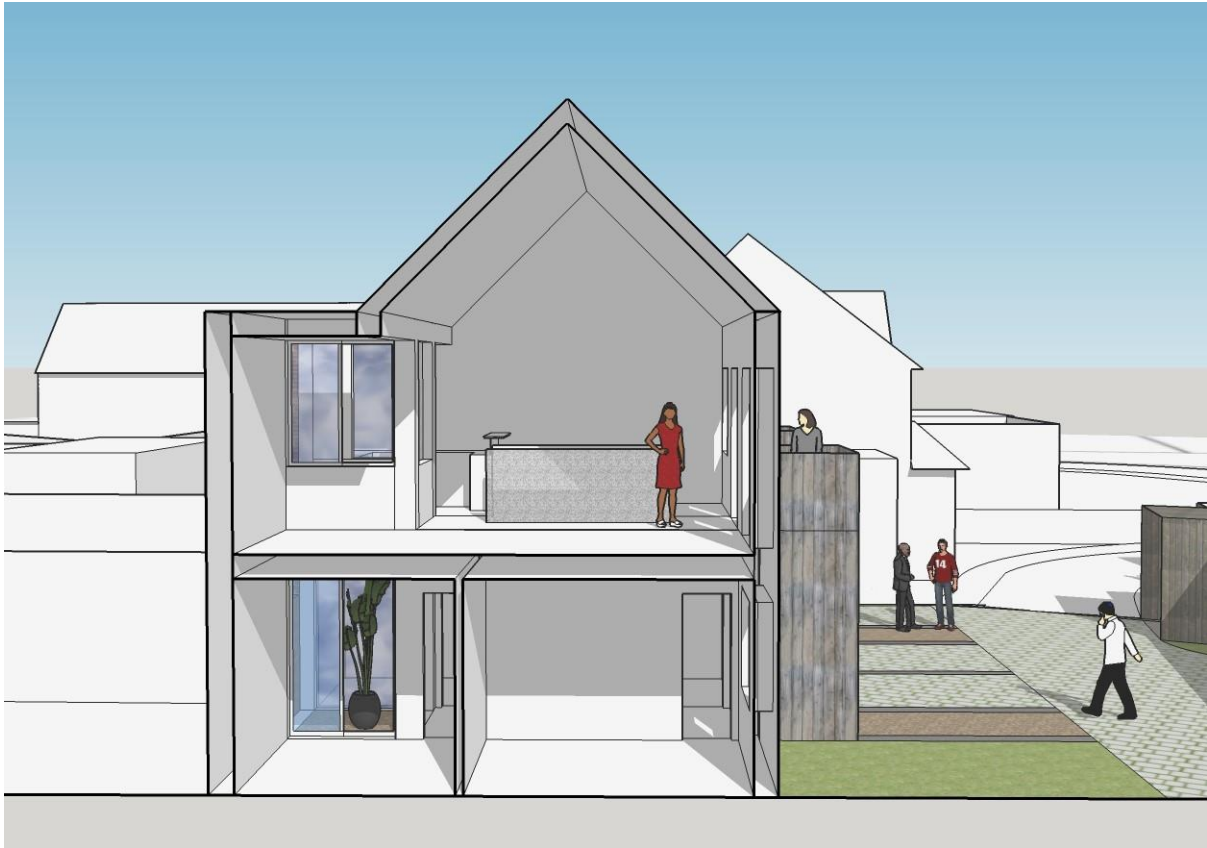


First floor layout option 1

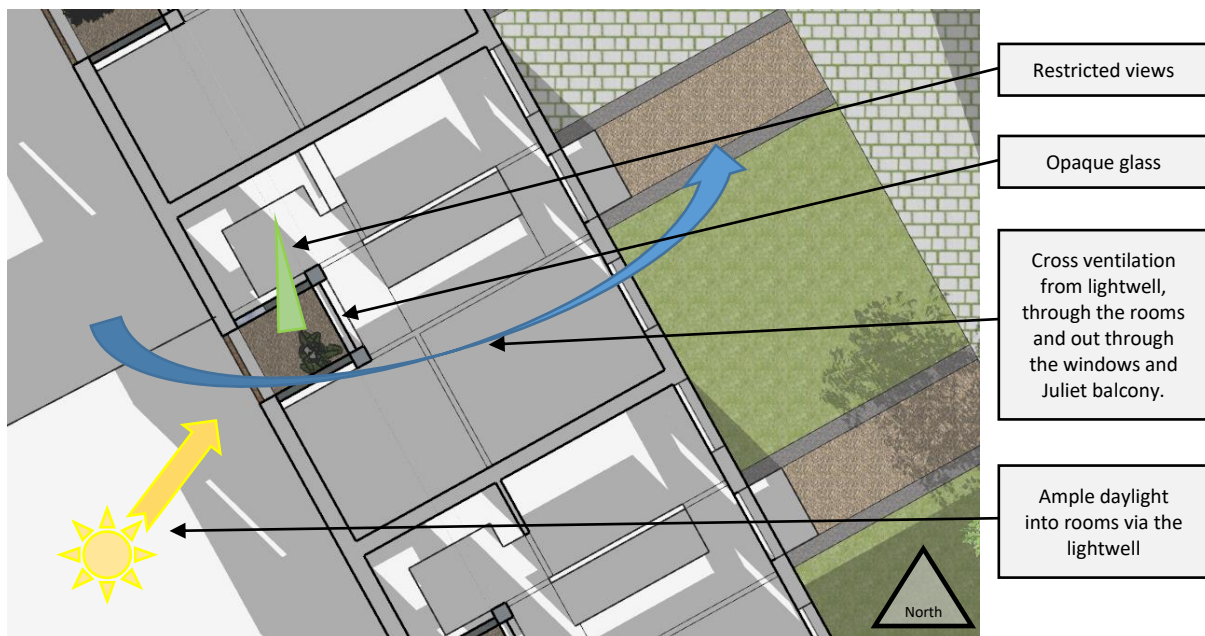


First floor layout option 2

The first floor is highly adaptable allowing for a number of arrangements. The fully opening balcony doors create a terrace that extends well into the room.



The spacious living and dining areas are enhanced by exposing the ceiling void. Standard, more intimate, ceiling heights are reserved for the kitchen area.



The large lightwell also facilitates natural cross-ventilation on both levels of the homes. The opaque glass obscures views into adjacent properties, giving privacy to the occupants and their neighbours.

Plans



Ground Floor Plan

NTS



First Floor Plan
NTS



Roof Plan
NTS

Design Team

Architect	Mix Developments
Cost Consultant	RPS
Structural Engineer	Clancy Consulting
Services Engineer	KUT